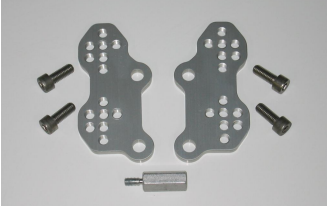


SUZUKI

SV Adjustable Rearset Plates

Installation Instructions:

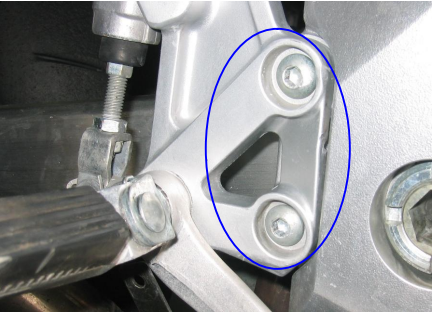


The following items below are included in your kit:

- 2 x Aluminum Plates
- 1 x Shift Rod Extender
- 4 x SS Plate Attach Bolts

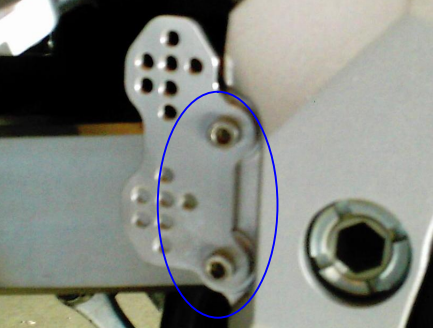
Right Side:

1. Disconnect the following from the rear-set:
 - a. brake-light switch spring
 - b. brake pedal spring
 - c. rearset kickplate support (not on 1st gen SV's)
2. Remove the two allen-head bolts circled below:



3. Install plate (plates are not side specific) with the included bolts as shown below.

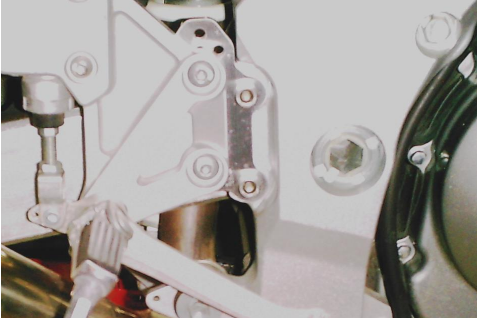
Note: Loc-tite is recommended for all threads.



4. Reinstall rearset assembly as shown below using bolts removed in Step #2.

Note: The springs disconnected in Step #1 may require adjustment or replacement to be reinstalled

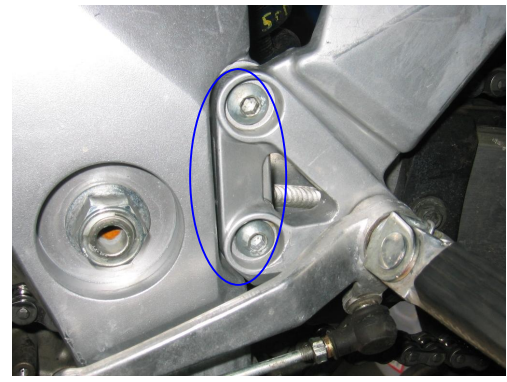
Note: Spring retention tab on late model SV's may prevent use of certain positions on the plates.



Left Side:

1. Disconnect the following from the rear-set:
 - a. Transmission Shift Rod

Note: One side of the shift rod uses reverse threads.
2. Remove the two allen-head bolts circled below:



3. Install plate with the included bolts as shown and attach the rearset assembly similar to the procedure on the right side:



4. Attach the Shift Rod Extension to the shift-linkage as shown below:



5. Re-install shift rod and adjust length according to desired riding position.

Limited Warranty:

Third-Perspective Design warrants that the SV Plates are free from defects in workmanship and material for a period of twelve months from the date of shipment. Our liability is limited to repairing or replacing the item. Third-Perspective Design will, at any time within the 12 month period, replace or repair this product, less return shipping costs, if build quality and workmanship are found to be degraded.