

Suzuki SV Series Rear Set Plates

Installation Instructions:

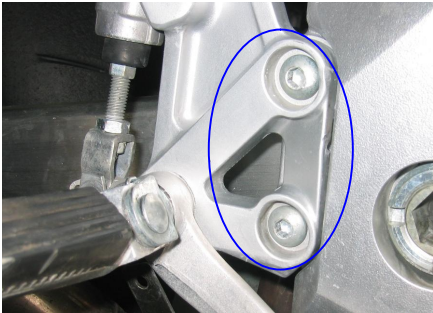


The following items below are included in your kit:

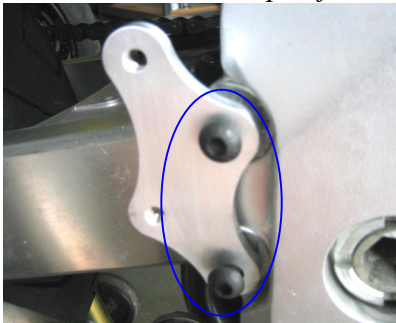
2 x Aluminum Plates
1 x Shift Rod Extender
4 x Plate Attach Bolts

Right Side:

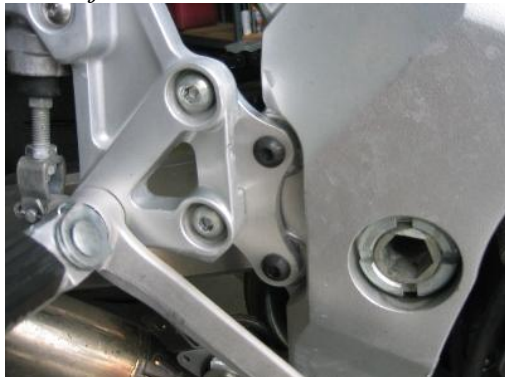
1. Disconnect the following from the rear-set:
 - a. brake-light switch spring
 - b. brake pedal spring
 - c. rearsset kickplate support (may not be present on 1st gen SV's)
2. Remove the two allen-head bolts circled below:



3. Install plate (plates are not side specific) with the included bolts as shown below.
Note: Plates are not side-specific



4. Reinstall rearsset assembly as shown below using bolts removed in Step #2.
Note: The springs disconnected in Step #1 may require adjustment to be reinstalled.

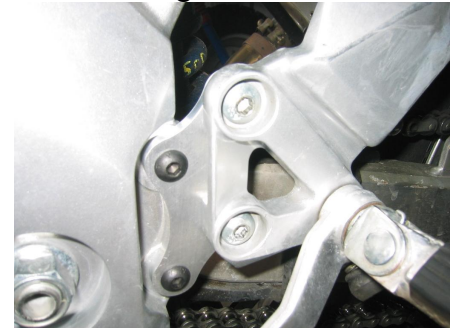


Left Side:

1. Disconnect the following from the rear-set:
 - a. Transmission Shift Rod
Note: One side of the shift rod uses reverse threads.
2. Remove the two allen-head bolts circled below:



3. Install plate with the included bolts as shown and attach the rearsset assembly similar to the procedure on the right side:



4. Attach the Shift Rod Extension to the shift-linkage as shown below:



5. Re-install shift rod and adjust length according to desired riding position.

Limited Warranty:

Third-Perspective Design warrants that the SV Plates are free from defects in workmanship and material for a period of twelve months from the date of shipment. Our liability is limited to repairing or replacing the item. Third-Perspective Design will, at any time within the 12 month period, replace or repair this product, less return shipping costs, if build quality and workmanship are found to be degraded.